

Candela



TULUM

Candela is a collection of 12 exquisitely designed boutique buildings that offer luxe studio residences minutes from the pristine Caribbean beaches of Tulum, Mexico. Envisioned to honor the natural environment, Candela residences are situated around a botanical, garden-style arboretum, immersing residents in a pristine jungle setting. Unlike any other residential offering in the region, Candela presents absolute privacy, intentional luxury and a community built upon holistic wellness, resulting in an effortless living experience meant for enjoying the celebrated lifestyle of Tulum.

TULUM, MEXICO

Table of Contents

● ○ ○ ○ ○ ○	LUXE STUDIO RESIDENCES 06
○ ● ○ ○ ○ ○	ARCHITECTURE & INTERIORS 18
○ ○ ● ○ ○ ○	AMENITIES & SERVICES 22
○ ○ ○ ● ○ ○	LOCATION 26
○ ○ ○ ○ ● ○	SUSTAINABILITY 30







LUXE STUDIOS

Candela offers private studio residences situated within 12 boutique villas that cater to the individual needs of each resident. Surrounded by native trees and minutes from the beach, luxe studio residences are connected by footpath and designed in a circular formation around a central, botanical garden-style setting for a community experience that inspires and engages.

Thoughtfully Designed Studio Residences



CREATED FOR LIFE IN TULUM

Offering a warm and inviting arrival experience, each studio residence features airy, spacious interiors efficiently designed to foster an indoor-outdoor connection with interiors that transition seamlessly to the outdoors through expansive glass doors that open to private terraces on each floor. Private spas, sun decks and rooftop terraces offer 360° views while providing the ultimate setting for enjoying the quintessential, outdoor-focused lifestyle long celebrated in Tulum.



Airy, Open-Plan Studio Floor Plans
Fully Equipped Kitchenettes
High-End Kitchen Appliances
Bar with Marble Countertops
Artisan Carpentry
Designer Fixtures
Private Sundecks
Rooftop Terrace & Jacuzzi
Towering Window Walls
Onsite Parking



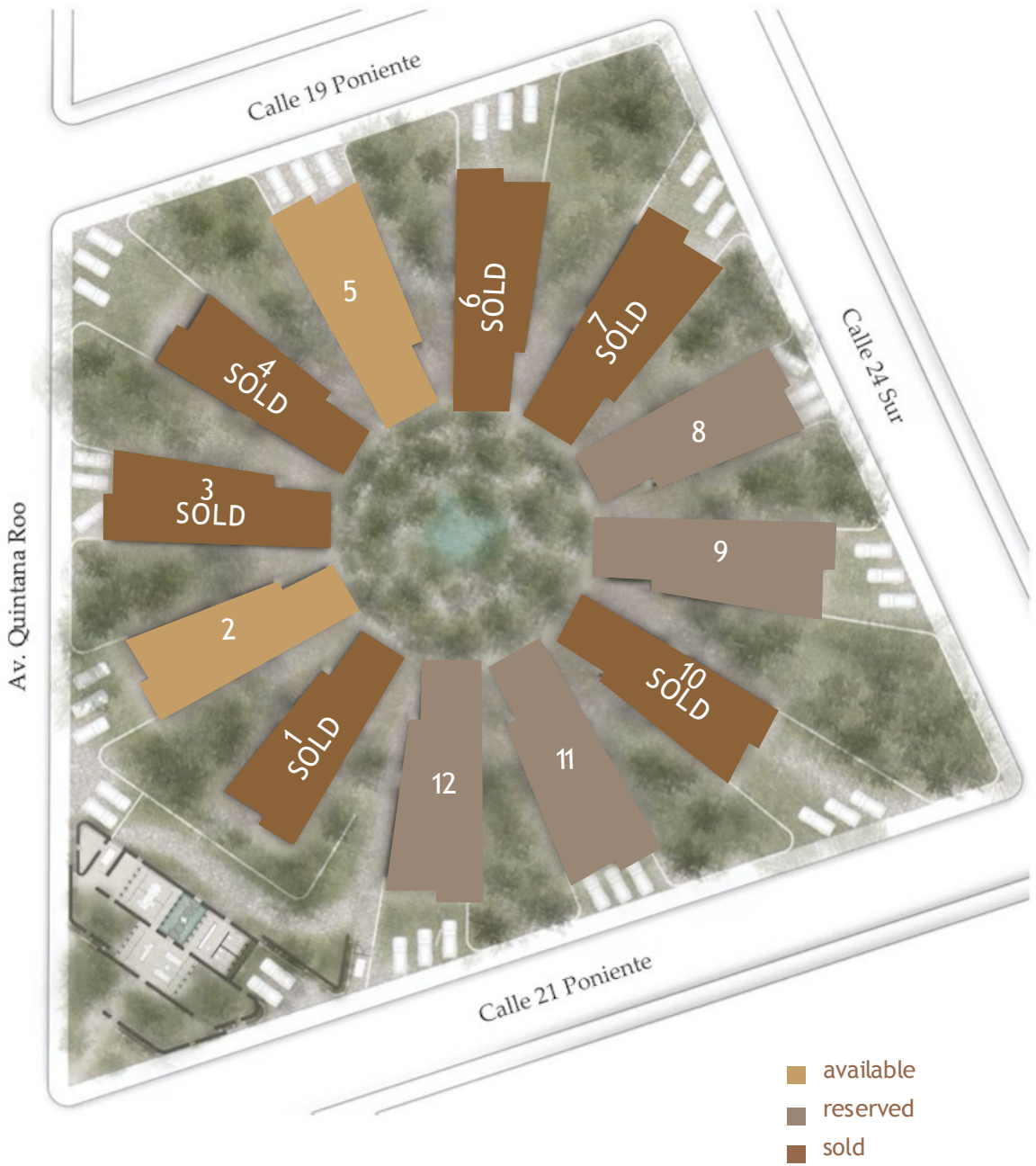
Tailored Ownership Opportunities

DESIGNED TO MAXIMIZE RETURN ON INVESTMENT

The most comprehensive investment offering at Candela, luxe studios offer each singular owner complete, absolute possession of their private residence, maximizing the possibilities of enjoying Tulum year-round. With the freedom to design, manage and enjoy the villa as each owner wishes, ownership at Candela unlocks opportunities to capture rental income through white-glove property management firm Rumba Hospitality, all while spending adequate time residing in the studio residence throughout each unique season in Tulum.

CUSTOM FLOOR PLANS & LAYOUTS

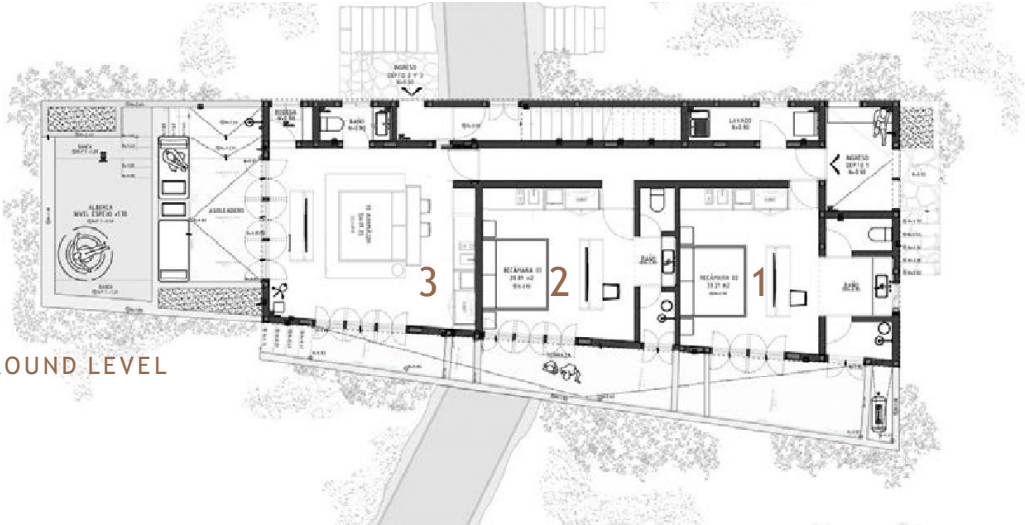
Each pyramidal-shaped boutique building features eight luxe studios distributed across three levels, plus a rooftop terrace amenity to be enjoyed by owners with a Jacuzzi, sundeck, dining and lounge areas, bar and restroom. The studio residences are designed to accommodate each owner's unique lifestyle and investment approach, including the option to join together studio residences to form larger lock-off apartments to increase income potential for owners seeking more space.



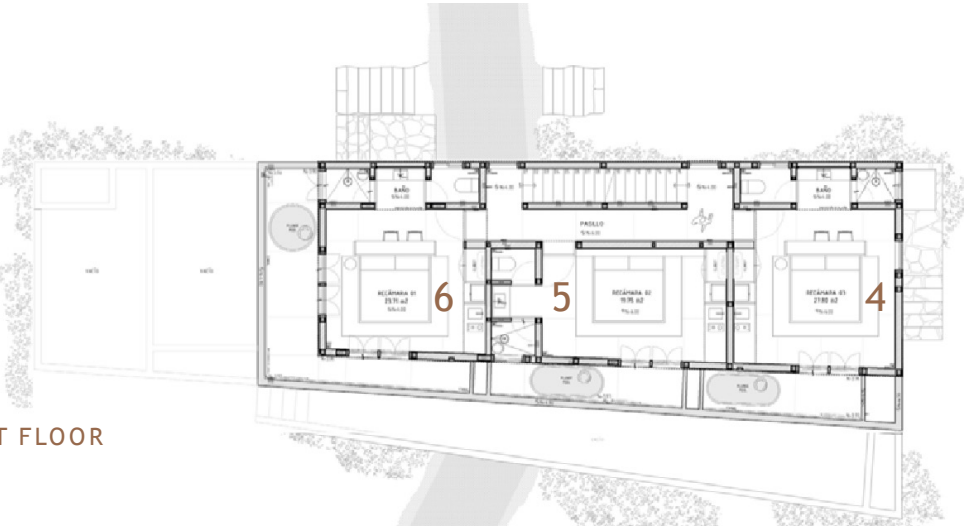
Inventory as of March 2023

Luxe Studio Floor Plans

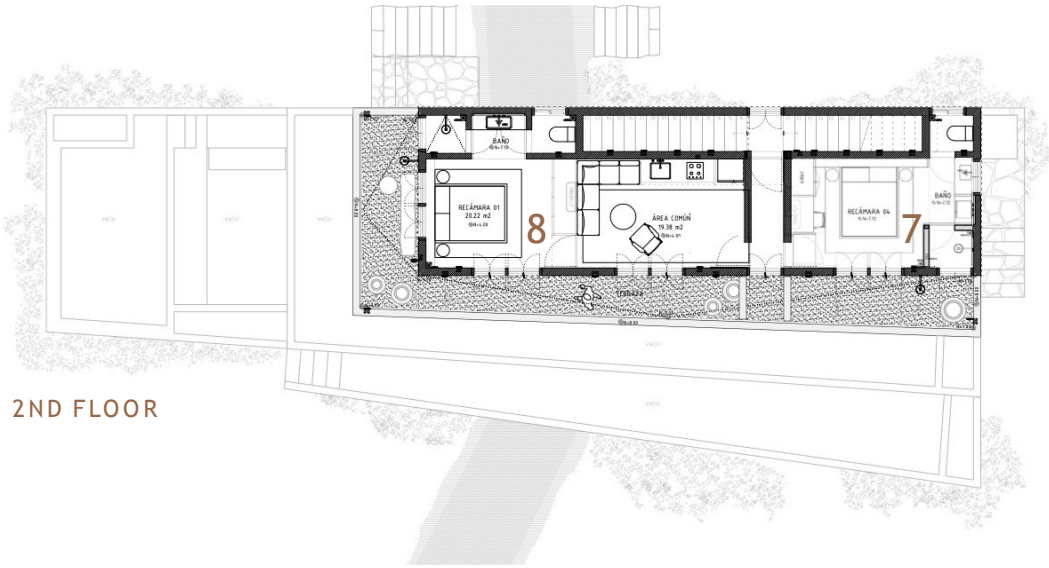
GROUND LEVEL



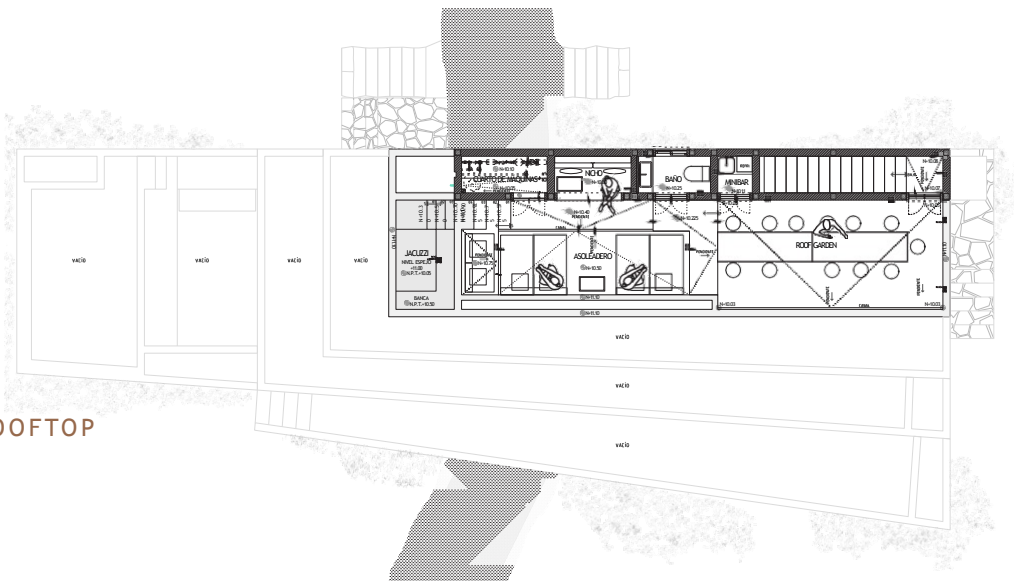
1ST FLOOR



2ND FLOOR



ROOFTOP







ARCHITECTURE & INTERIORS

Candela is the result of the extraordinary, environmentally conscious vision of Architects Salvador Macias and Magui Peredo of Estudio Macias Peredo. An homage to Tulum’s ancient Mayan culture in both look and feel, boutique buildings present a compelling juxtaposition that merges past with present day. It’s this rare duality—pyramidal-shaped structures resembling ancient archeological ruins blending in harmony with fresh, contemporary interiors—that creates an authentic, modern living experience that honors the history of Tulum.

A Worthy Centerpiece

LIVING AS ONE
WITH NATURE

Celebrated as an integral architectural feature, the surrounding nature filters light through its lush foliage to alter the environment within Candela as the sun moves across the sky each day. This connection— both indoors and outdoors—creates a meaningful environment where studio residences rise amidst the trees as if mirroring historic vestiges that have been immersed in spectacular natural settings for generations.





ELEGANTLY REFINED INTERIORS

A canvas for individual expression, studio residence interiors at Candela showcase the contemporary, sophisticated vision by the esteemed designers at Habitación 116. Airy, open spaces showcase meticulous attention to detail, with hand-sculpted features and modern finishes, while locally sourced, organically inspired materials, such as wood and natural stone, are found throughout.

TURNKEY DESIGN OFFERINGS

Studio residences at Candela are presented fully furnished and equipped, providing owners with a turnkey, curated experience from Habitación 116.





AMENITIES & SERVICES

While the most compelling aspect of life at Candela is the pristine natural surroundings, it is the lifestyle in totality that truly makes the community unlike any other offering in Tulum. Rooted in a mission to improve quality of life for residents, even when not present in Tulum, Candela has designed amenities and services to support holistic health, focusing on an integrative approach that nourishes each aspect of one's well-being—physical, emotional, intellectual, environmental, spiritual and social. From thoughtfully designed central spaces to each carefully curated experience, Candela inspires and elevates daily life, both in Tulum as well as around the world.

Fostering a Sense of Community



THE ARBORETUM

Reminiscent of an ancient Mayan settlement, the pyramid-style buildings surround a central, modern arboretum, a botanical garden-like setting beneath the shade of the jungle trees at the heart of Candela. Designed for intimate gatherings and grand festivities, The Arboretum provides a source of restoration, connection and engagement. Here, slow mornings lead to long, casual afternoons that heat up as the sun sets and the jungle comes to life. Secluded walking paths, communal fire pits, observation zones and casual lounge areas make the destination an integral part of daily life at Candela.

LA COCINA

La Cocina, a gastrinomial destination, welcomes guests throughout the day, commencing with morning coffee and hand-crafted, artisanal teas made from locally sourced, natural ingredients. Throughout the day, La Cocina provides a central point for organic, spontaneous gatherings. In the evenings, Sobremesa, a special self-activated ritual exclusive to Candela, brings guests together to relax under the starry night's sky.

RESIDENTIAL SERVICES & EXPERIENCES

Candela has developed proprietary services and experiences that are rooted in its mission to improve the wellbeing of those within the community and at Candela. Guests have the opportunity to enjoy personalized, in-villa dining experiences, exclusive spa services with oil blends from nearby gardens, and customizable concierge services to ensure every aspect of your time in Tulum is taken care of.

EXCEPTIONAL PROPERTY & RENTAL MANAGEMENT

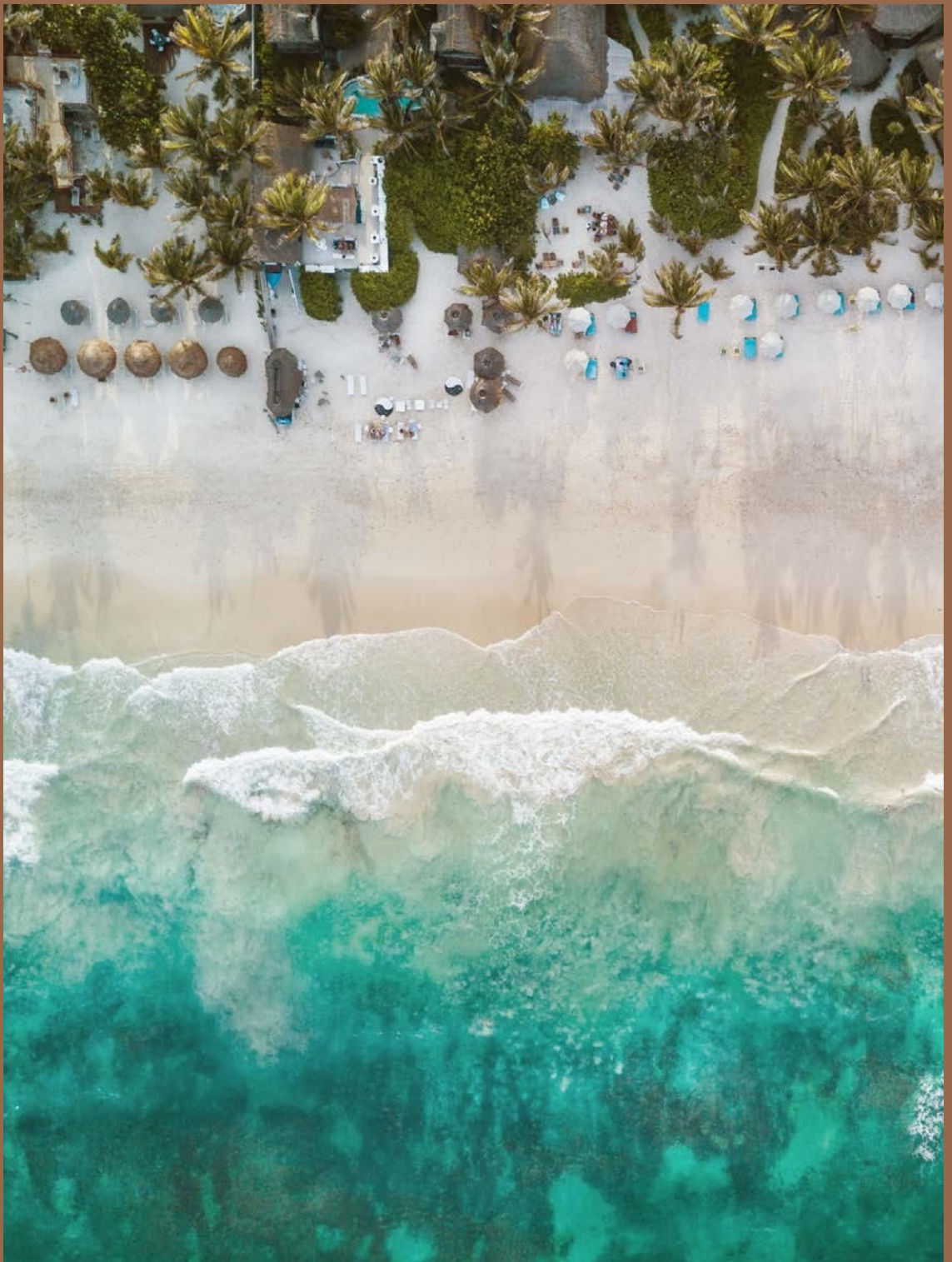
Residential services at Candela are designed to offer an effortless, turnkey living experience so residents may focus on the beauty of life in Tulum while maximizing their return on investment when out of town. Candela has engaged Rumba Hospitality, the leading luxury villa rental company in Riviera Maya, to maximize return on investment for owners. The Rumba Hospitality team holds key partnerships in the luxury segment and has crafted exceptional vacations for more than a decade. Owners will enjoy 24/7 on-site security and access to home maintenance, housekeeping and laundry services on an à la carte basis.

EXCLUSIVE PARTNERSHIP WITH NEST TULUM

Candela has partnered with NEST, one of the best boutique hotels in Tulum, famous for unsurpassed hospitality and an intimate oceanfront setting. Owners are granted exclusive rates on food and beverage items with no minimums at the remarkable beach club and award-winning restaurant, which was recognized by Travel + Leisure as one of the five best in Riviera Maya. A magical setting steps from the Caribbean shores, NEST Tulum showcases a blend of modern and traditional Mexican cuisine and unique spirits, all locally sourced with sustainable ingredients.

AMENITY DESTINATIONS

- Yoga Deck
- Rooftop Meditation Area
- Common Pool
- Massage Area
- Permaculture Garden
- Meliponary
- Juice Bar
- Walking Trail
- Artisan Refill Boutique
- Organic Composting Program





LOCATION

Situated along the pristine Caribbean coast in Mexico's Yucatán Peninsula, Tulum is a picturesque haven for travelers, offering white-sand, palm-fringed beaches that meet lush, pristine jungle habitats. Daily flights from around the world to the nearby Cancun International Airport attract an international audience that seeks the enviable, tropical climate of Tulum, with an average annual temperature of 79°F (26°C) and average annual sea temperature of 82°F (28°C). Nestled within the leafy jungle, Candela provides unmatched privacy and exclusivity while located just minutes from the turquoise waters of the famed Caribbean coastline.

Exploration Abounds in Tulum

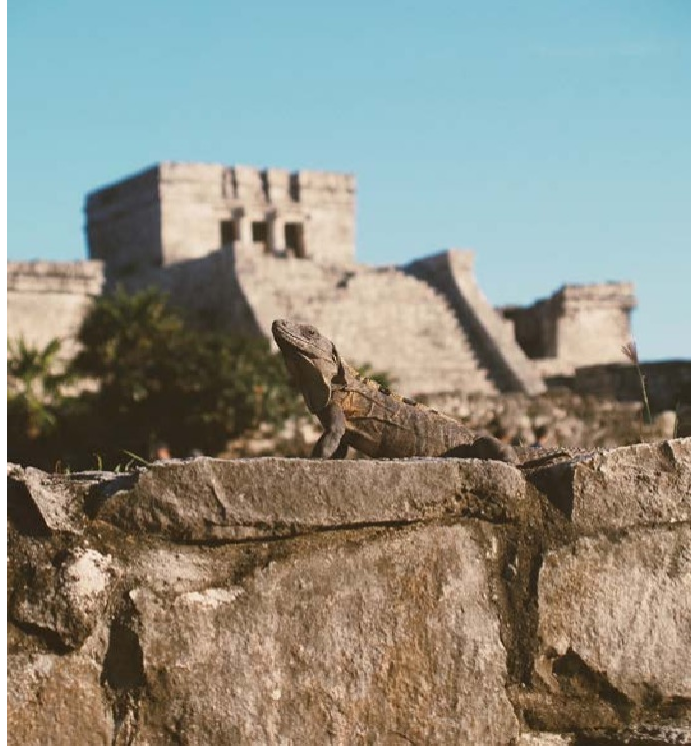


SEA TO SHORE ADVENTURES

Candela is situated just north of the Sian Ka'an biosphere, a UNESCO World Heritage Site, which boasts one million acres of pure, untouched nature that stretches as far as the eye can see. The enchanting natural beauty continues just east of Candela with ancient ruins that overlook the sea and captivating lagoons and cenotes that reveal underground crystal-clear waters, long considered sacred by the Mayan people. Yet, the most popular nature-driven adventures include the warm Caribbean waters of Tulum, ideal for snorkeling or diving the world's second-largest barrier reef.

UNRIVALED EXPERIENCES AWAIT

Sun-soaked days meet lively nights in Tulum, blending wellness and respite with celebration and engagement. Through world-class, chef-driven activations, live music and festive, wellness-focused rituals, Tulum embraces a distinctive spirit all its own. Candela places owners just minutes from the newly constructed and soon-to-be-opened beach road, Av. Kukulcán, which connects Downtown Tulum to the beach and provides direct access as well as the opportunity to retreat as one pleases.







SUSTAINABILITY

Candela sits within a new area earmarked by the Mexican government for high-end, low-density development, ensuring privacy and views will be preserved for generations to come. Encompassing 2.5 acres of land with more than 70% being preserved, Candela sets a new standard for forward-thinking, environmentally sensitive, resource-efficient residential design in Tulum. From the initial concept of the master-plan to developing permaculture guidelines, Candela has gone to great lengths to protect its precious surroundings.

Constructing a Sustainable Community

IMPLEMENTING ENVIRONMENTAL INITIATIVES

Candela was inspired by ancient Mayan culture, with boutique buildings rising up vertically through natural surroundings in a pyramidal formation to minimize the jungle footprint. With low-density at the core of the community's plan, each of the 12 boutique buildings come to life under strict building and construction practices, including eco-friendly building materials, setting limits for the acceptable distance of freighted materials, and designing efficient uses of walls and windows to naturally lower indoor temperatures and minimize energy consumption. Environmental initiatives have also been implemented, from installing water treatment facilities to creating strict waste management protocols.





UTILIZING PERMACULTURE PRACTICES

Candela will oversee permaculture practices, including organic gardens and composting exercises, to influence a more regenerative, self-sufficient community system. Owners and guests will enjoy the benefits of these integrated, inclusive actions through access to locally grown, organic foods and beverages, all hand-crafted with natural ingredients and herbs from the surrounding lands.

ESTABLISHING MEANINGFUL PARTNERSHIPS

Candela supports local communities through developing economic and social partnerships. No detail is without purpose at Candela, ranging from sourcing locally made, biodegradable products crafted by local families to offering opportunities for guests to experience Tulum in a more authentic, culturally supportive way that is not often accomplished when establishing tourism programs.





Candela

All of the images in this document are for illustrative purposes only. All renderings, color schemes, floor plans, maps and displays are artists' conceptions and are not intended to be an actual depiction of the villas or their surroundings. Furniture for the villas is sold separately, please contact your sales representative for more information. The "Developer reserves the right to change floor plans, specifications, pricing promotions, incentives, features, designs, materials, amenities and dimensions without notice in its sole discretion. Square footage and dimensions are approximate, subject to change without prior notice or obligation and may vary in actual construction. . 